



# MVF403 Arena Vision

## ArenaVision MVF403 C

Since it was first introduced in 1988, Philips ArenaVision has proven to be the best floodlighting system ever for sports lighting applications, most of which have to fulfill the highest specifications to enable television coverage of national and international events. ArenaVision is an integrated system that is supplied by one manufacturer as part of a complete system. Philips is the only manufacturer to provide all relevant technologies from lamp to gear to floodlight, so that everything works in synergy. With ArenaVision, the key disciplines of lamp, optic and gear design were brought together with a single mission: to create the best possible floodlight that will operate effectively for many years. ArenaVision MVF403 is ideal for indoor sports halls as well as many outdoor sports and other illumination uses. It comes with a variety of reflectors and lamps and offer a choice of optical systems and three levels of power output for every conceivable application.

**PHILIPS**

**Features**

- Together with the unique oval optics, the MHN-SA 2000W lamp guarantees the highest possible system efficiency, low glare and best-ever lighting levels on the field
- Built-in reflector reduces spill light and glare even further
- Rear opening access for easy lamp replacement
- Housing dust proof and waterproof to IP65; no internal cleaning required
- MHN-LA lamp version equipped as standard with series ignitor and terminal block in an aluminium connection box on the bracket.

- Wire mesh to prevent large pieces of glass falling out
- Optional safety switch to cut off current when luminaire is opened (requires additional contactor - supplied by others)
- Uplighting versions available (220/240V MHN-LA 1000W and MHN-SA 1800W) for architectural lighting
- Integrated system of optics, gear and transverse MHN-SA 1800W, MHN-SA 2000W or MHN-LA 1000W lamp in a single housing, ensuring high efficiency and low glare.

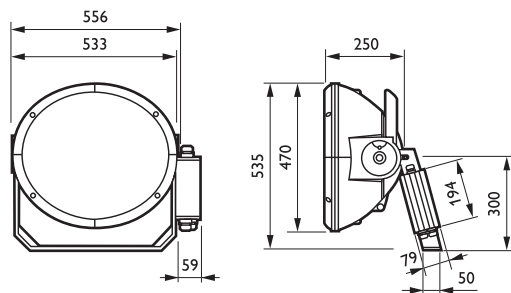
**Application**

- Outdoor sports lighting
- Architectural flood lighting
- Indoor sports halls

Related products



Dimensional drawing



MVF403 C 1xMHN-SA2000W 380-415V A1

**General information**

Order code	Product family code	Number of light sources	Lamp family code	Lamp power	Gear	Optic type	Optical cover/ lens type	Country version
910401642180	MVF403	1	MHN-SA	2000 W	CONV	CAT-A1	No	-
910401642280	MVF403	1	MHN-SA	2000 W	CONV	CAT-A3	No	-
910401642380	MVF403	1	MHN-SA	2000 W	CONV	CAT-A4	No	-
910401642480	MVF403	1	MHN-SA	2000 W	CONV	CAT-A5	No	-
910401642580	MVF403	1	MHN-SA	2000 W	CONV	CAT-A6	No	-

Order code	Product family code	Number of light sources	Lamp family code	Lamp power	Gear	Optic type	Optical cover/ lens type	Country version
910401642680	MVF403	1	MHN-SA	2000 W	CONV	CAT-A7	No	-
910401642780	MVF403	1	MHN-SA	2000 W	CONV	CAT-A2	No	-
910401647380	MVF403	1	MHN-SA	1800 W	CONV	CAT-A4	UP	-
910403345801	MVF403	1	MHN-LA	1000 W	CONV	CAT-A1	UP	CN
910403345901	MVF403	1	MHN-LA	1000 W	CONV	CAT-A3	UP	CN
910403346001	MVF403	1	MHN-LA	1000 W	CONV	CAT-A2	UP	CN
910403346101	MVF403	1	MHN-LA	1000 W	CONV	CAT-A4	UP	CN
910403346201	MVF403	1	MHN-LA	1000 W	CONV	CAT-A5	UP	CN
910403346301	MVF403	1	MHN-LA	1000 W	CONV	CAT-A6	UP	CN
910403346401	MVF403	1	MHN-LA	1000 W	CONV	CAT-A7	UP	CN
910403346501	MVF403	1	MHN-LA	1000 W	CONV	CAT-A1	No	CN
910403346601	MVF403	1	MHN-LA	1000 W	CONV	CAT-A2	No	CN
910403346701	MVF403	1	MHN-LA	1000 W	CONV	CAT-A3	No	CN
910403346801	MVF403	1	MHN-LA	1000 W	CONV	CAT-A5	No	CN
910403346901	MVF403	1	MHN-LA	1000 W	CONV	CAT-A6	No	CN
910403347001	MVF403	1	MHN-LA	1000 W	CONV	CAT-A7	No	CN
910403347101	MVF403	1	MHN-LA	1000 W	CONV	CAT-A4	No	CN
911401050780	MVF403	1	MHN-LA	1000 W	CONV	CAT-A3	UP	-
911401050880	MVF403	1	MHN-LA	1000 W	CONV	CAT-A6	UP	-
911401050980	MVF403	1	MHN-LA	1000 W	CONV	CAT-A5	UP	-
911401051080	MVF403	1	MHN-LA	1000 W	CONV	CAT-A7	UP	-
911401054480	MVF403	1	MHN-SA	1800 W	CONV	CAT-A1	No	-
911401054580	MVF403	1	MHN-SA	1800 W	CONV	CAT-A7	UP	-
911401054680	MVF403	1	MHN-LA	1000 W	CONV	CAT-A1	No	-
911401054780	MVF403	1	MHN-LA	1000 W	CONV	CAT-A2	No	-
911401054880	MVF403	1	MHN-LA	1000 W	CONV	CAT-A3	No	-
911401054980	MVF403	1	MHN-LA	1000 W	CONV	CAT-A4	No	-
911401055080	MVF403	1	MHN-LA	1000 W	CONV	CAT-A5	No	-
911401055180	MVF403	1	MHN-LA	1000 W	CONV	CAT-A6	No	-
911401055280	MVF403	1	MHN-LA	1000 W	CONV	CAT-A7	No	-
911401055380	MVF403	1	MHN-LA	1000 W	CONV	CAT-A2	UP	-
911401055480	MVF403	1	MHN-LA	1000 W	CONV	CAT-A4	UP	-
911401055580	MVF403	1	MHN-SA	1800 W	CONV	CAT-A2	No	-
911401055680	MVF403	1	MHN-SA	1800 W	CONV	CAT-A3	No	-
911401055780	MVF403	1	MHN-SA	1800 W	CONV	CAT-A4	No	-
911401055880	MVF403	1	MHN-SA	1800 W	CONV	CAT-A5	No	-
911401055980	MVF403	1	MHN-SA	1800 W	CONV	CAT-A6	No	-
911401056080	MVF403	1	MHN-SA	1800 W	CONV	CAT-A7	No	-
911401056180	MVF403	1	MHN-SA	1800 W	CONV	CAT-A2	UP	-
911401056280	MVF403	1	MHN-SA	1800 W	CONV	CAT-A6	UP	-
911401060780	MVF403	1	MHN-SA	1800 W	CONV	CAT-A1	UP	-
911401060880	MVF403	1	MHN-SA	1800 W	CONV	CAT-A3	UP	-
911401060980	MVF403	1	MHN-SA	1800 W	CONV	CAT-A5	UP	-



© 2014 Koninklijke Philips N.V. (Royal Philips)  
All rights reserved.

Specifications are subject to change without notice. Trademarks are the property of Koninklijke Philips N.V. (Royal Philips) or their respective owners.

[www.philips.com/lighting](http://www.philips.com/lighting)

2014, January 16  
data subject to change