



Tempo – compact and consistent

Tempo 3 RVP351

Tempo is a complete floodlighting range offering a wide choice of lamp types and symmetrical and asymmetrical reflectors. It is designed for general-purpose floodlighting, and is particularly suited to small- to medium-scale area or surface lighting. The Tempo series' compact housing guarantees optimum visual integration. Anodized-aluminum reflectors ensure a highly efficient beam distribution, while the nylon bolt caps feature a goniometric aiming device for easy adjustment and alignment. A universal mounting bracket allows ceiling, wall or surface mounting with a wide range of adjustment for both down- and uplighting. Tempo's all-weather construction is designed to make cleaning and servicing easy and fast. Access to the lamp and gear is simple, via the hinged front glass with its quick-release stainless-steel clips. All Tempo luminaires are RoHS-compliant.

Benefits

- Complete floodlighting range with a wide choice of lamp types and symmetrical or asymmetrical reflectors for highly efficient beam distribution
- Ideal for a variety of outdoor applications from architectural, facade and billboard lighting to area and (leisure) sports lighting
- Optimal visual integration with compact housing and metallic grey finish

Features

- Wide choice of lamp types
- Symmetrical and asymmetrical reflectors
- Compact housing with metallic grey finish
- Aiming device
- Hinged front glass with quick-release clips

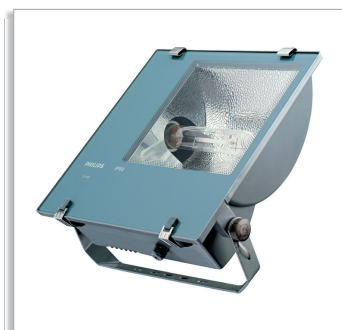
PHILIPS

Application

- Facades
- Area lighting
- Architectural lighting
- Billboards

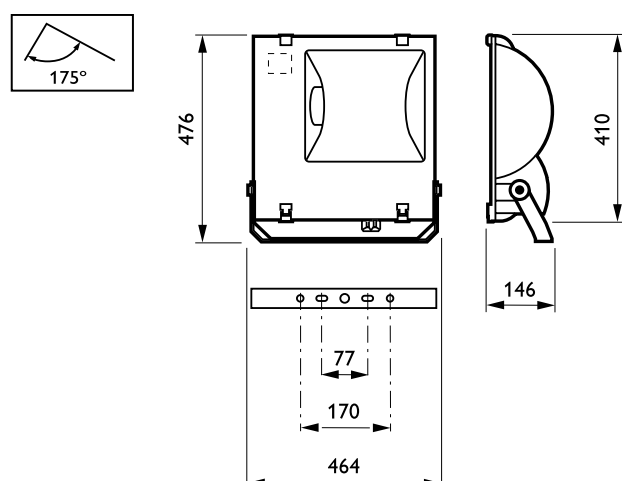
Specifications

• Type	RVP351	• Color	Grey, RAL 9007, powder-coated Color-matched bracket, grommet and hinges
• Light source	HID: - 1 x MASTER HPI-T Plus / E40 / 250, 400 W - 1 x SON-TPP / E40 / 250, 400 W	• Installation	Ceiling, wall or floor mounting Cable entry via M20 cable gland Ambient temperature outdoor: 35°C Drag factor (SCx): 0.203 m Max. adjustment from the horizontal: 175°
• Lamp included	Yes (K)	• Maintenance	Hinged front glass with quick-release clips for in-position lamp replacement No internal cleaning required
• Gear and compensation (integrated)	Electromagnetic (low loss), 230 or 240 V / 50 Hz: - Parallel compensated (IC)		
• Optic	Asymmetrical (A) Symmetrical (S)		
• Materials and finishing	Housing: die-cast aluminum, corrosion-resistant powder coating Glass: thermally hardened, 4 mm thick Gasket: premium bonded silicone Mounting bracket: steel Aiming device cap: nylon Fixation clips: stainless steel Reflector: anodized, high-purity aluminum		

Related products

Tempo 3 RVP351 area flood-lighting luminaire

Dimensional drawing



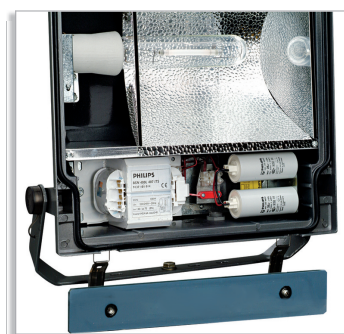
Product details



Rear view



Protractor scale having degree intervals for easy adjustment and alignment



Integrated gear unit

General Information

order code	CE mark	ENEC mark	Gear	Glow-wire test	Lamp family code	Lamp power	Number of light sources	Optic type	Product Family Code
910502548418	CE mark	-	CONV	850/5	HPI-TP	250	1	A	RVP351
910502548518	CE mark	-	CONV	850/5	HPI-TP	250	1	S	RVP351
910502548618	CE mark	-	CONV	850/5	HPI-TP	400	1	A	RVP351
910502548718	CE mark	-	CONV	850/5	HPI-TP	400	1	S	RVP351
910502548818	CE mark	-	CONV	850/5	SON-TPP	250	1	A	RVP351
910502548918	CE mark	-	CONV	850/5	SON-TPP	250	1	S	RVP351
910502549018	CE mark	-	CONV	850/5	SON-TPP	400	1	A	RVP351
910502549118	CE mark	-	CONV	850/5	SON-TPP	400	1	S	RVP351

Approval and Application

order code	Mech. impact protection code
910502548418	IK07
910502548518	IK07
910502548618	IK07
910502548718	IK07

order code	Mech. impact protection code
910502548818	IK07
910502548918	IK07
910502549018	IK07
910502549118	IK07



© 2015 Koninklijke Philips N.V. (Royal Philips)
All rights reserved.

Specifications are subject to change without notice. Trademarks are the property of Koninklijke Philips N.V. (Royal Philips) or their respective owners.

www.philips.com/lighting

2015, December 24
data subject to change